

Getting started in TRUECHART4POWERBI

- [Prerequisites](#)
- [First steps](#)
 - [Add TRUECHART to your report page](#)
 - [Add data to TRUECHART](#)
 - [Applying a user name](#)
- [Design hint](#)
 - [Where to go from here?](#)

This document describes the first steps on how to use TRUECHART for Power BI.

Prerequisites

It is assumed that TRUECHART is already installed. If not, consult the [TRUECHART Installation Guide](#) to get a detailed explanation of the installation process.

Furthermore, users must be created in order for the TRUECHART visual to communicate with the TRUECHART service. If you need help, consider reading the [TRUECHART Service Guide](#).

First steps

Add TRUECHART to your report page

To add TRUECHART to your report, choose TRUECHART from the visualization menu. This will create a new empty TRUECHART visual.

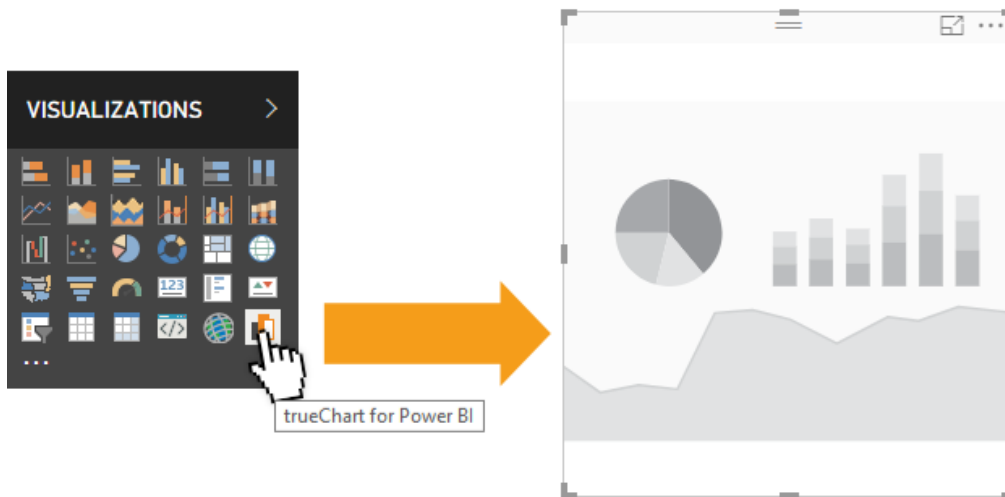


Figure 1. Clicking on the TRUECHART icon will create a new visual on your report.

Add data to TRUECHART

Now add some data from Power BI's **Fields** pane. At least one dimension and one measure must be selected.

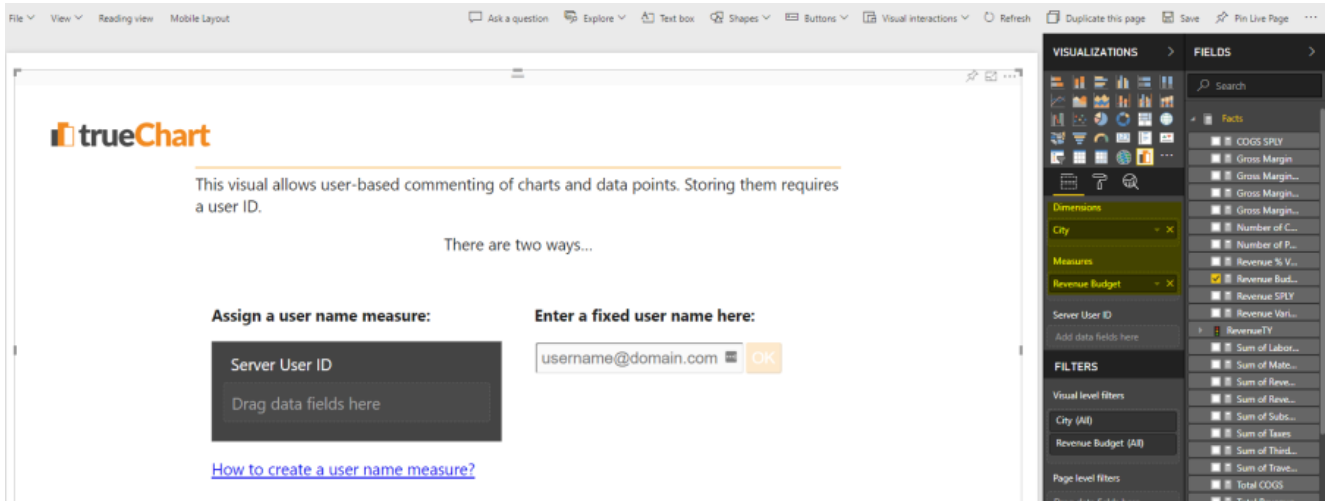


Figure 2. Initial user setup screen after adding dimension and measure.

Applying a user name

After adding data to TRUECHART Visualisation it is needed to specify a static or dynamic user name in order to support the commenting functionality. This is only necessary for TRUECHART Server.

Find additional information here: [Setup user binding](#).

Design hint

In order to get a clearer representation of the TRUECHART visualization, it is recommended to select the representation under *View > Actual size*.

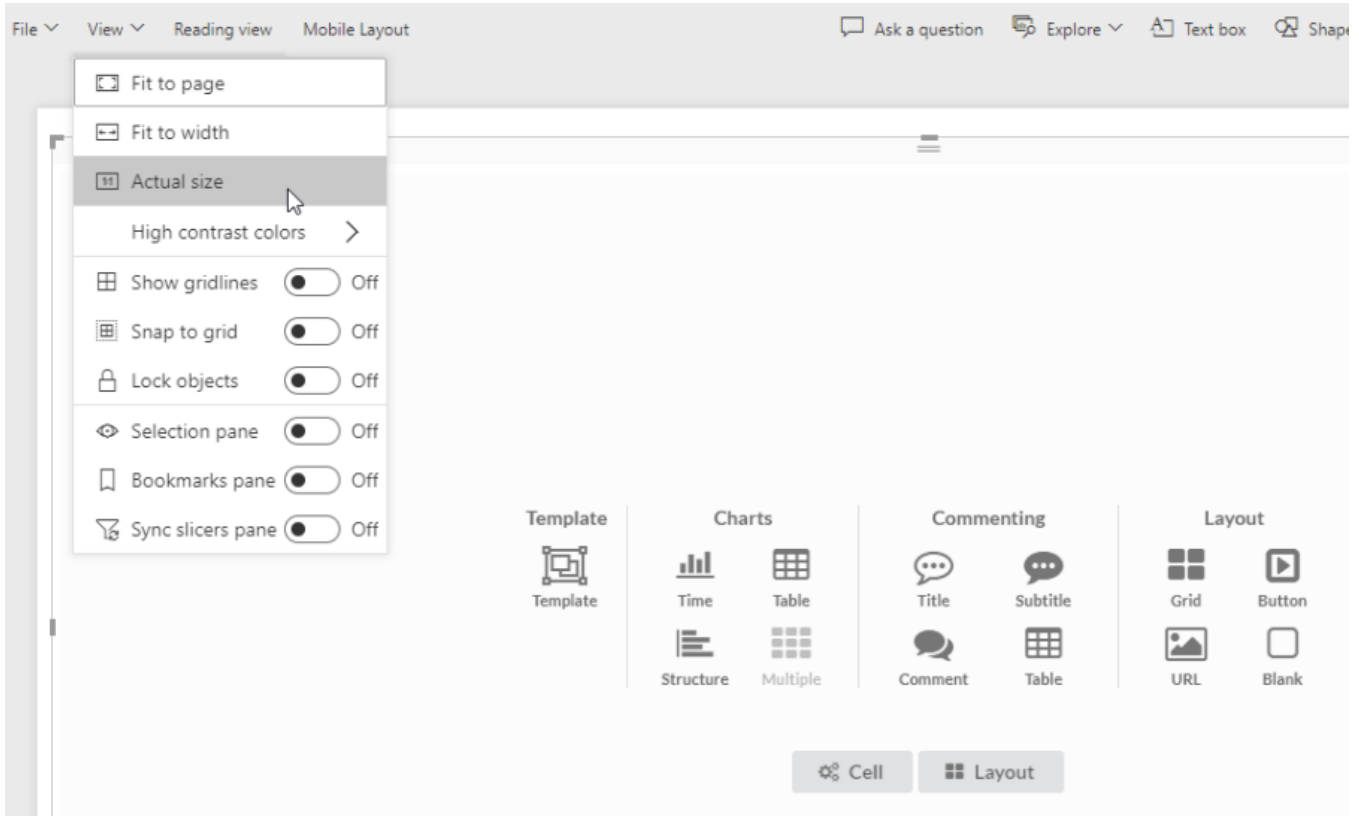


Figure 3. Use actual size view mode

Where to go from here?

Congratulations! You've just created your first TRUECHART visualization and successfully added data to the display. Information about the further configuration of TRUECHART can be found in [the general introduction](#).